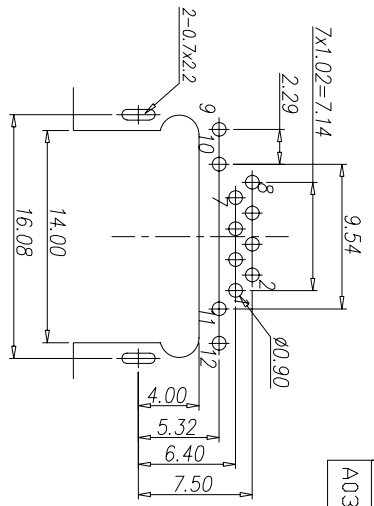
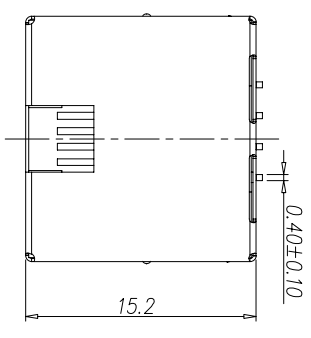


CATEGORY	DESCRIPTION	P/N #
CONNECTOR	Modular Jack, 8P8C, Straddle DIP	MJ88B-XX11-RVLX1-X

料号由原MJ88B-BX11-RVLX1-X
变更为 MJ88B-XX11-RVLX1-X

REV.	ECN NO	DESCRIPTION	REVISED	DATE
A01	—	New Release	XSY	2013.10.09
A02	—	变更料号	XSY	2016.05.05
A03	—	增加塑胶材质选项	XSY	2018.01.04



Recommend PCB Layout
(Jack Top View)
Tolerance: ±0.05mm

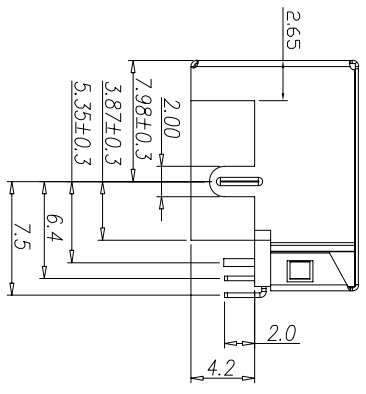
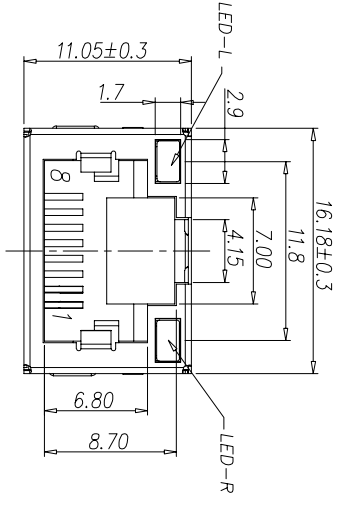


Table 2

X	Housing Color	Housing Material
B	Black	LC9 UL94V-0
W	White	PA9T UL94V-0

MJ88B-XX11-RVLX1-X

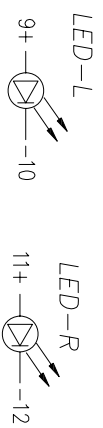
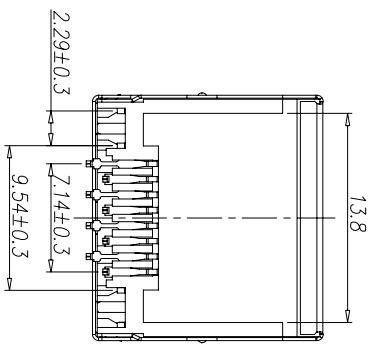
X	包装方式
C	载带包装
P	吸塑包装
C1	载带包装 (热封式)

Table 1

X	LED TYPE	LED-L	LED-R
1	LED 塑胶主体透明白色	Yellow	Green
2	LED 塑胶主体透明带颜色区分	Green	Yellow
3	LED 塑胶主体透明带颜色区分	Green	Yellow
4	LED 塑胶主体透明白色	Green	Yellow

Material & Plating

X	Terminal Plating
0	Au 1u" Plating
1	Au 3u" Plating
2	Au 6u" Plating
3	Au 15u" Plating
4	Au 30u" Plating
5	Au 50u" Plating



SPECIFICATIONS:

1. RJ Electrical Characteristics
 - 1-1: Voltage: 150V AC RMS
 - 1-2: Current Rating: 1.5A
 - 1-3: Contact Resistance: 40mΩ MAX.
 - 1-4: Insulation Resistance: 500MΩ MIN.
 - 1-5: Dielectric Withstand Voltage :1000V AC
 - 1-6: Operate Temperature: -40°C~80°C

A B C D A B C D

e	LED-R	1	See Table 1	Tin Plating
d	LED-L	1	See Table 1	Tin Plating
c	Shielding	1	Brass, T=0.2mm	Ni Plating
b	Terminal	8	Phosphor Bronze, T=0.3mm	Au/Tin Plating
a	Housing	1	See Table 2	See Table 2
NO.	PART NAME	QTY	MATERIAL	PLATING & COLOR

UNLESS OTHERWISE SPECIFIED TOLERANCES
DECIMALS: ANGLES:
X :±0.5 X :±2°
X.X :±0.3 X.X :±1°
X.XX :±0.2

东莞市合陵电子有限公司
DongGuan Heling Electronic Co.,LTD

SCALE: 1/1 UNIT: mm	DWG.NO: WI-061-001
SIZE: A3 PAGE: 1 OF 1 REV: A03	
APPROVED BY	CHECKED BY
DICK	XSY
CUSTOMER COPY	PREPARED BY XSY